

# Metal Roofs by Goldin Metals

## Durable

- According to the Metal Roofing Alliance, you can expect a metal roof to last at least 2 to 3 times longer than a regular roof.
- According to the Metal Roofing Alliance, the average life span of an asphalt roof is 12 to 20 years; count on a metal roof lasting 40 to 60 years and beyond.

## Environmentally Friendly

- The recycled content of the steel in a metal roof is about 56% - far superior to asphalt.
- According to the National Association of Homebuilders Research Center, 20 billion pounds of asphalt shingles are dumped into U.S. landfills every year.
- In contrast to many other building materials, steel is routinely collected in aggregate quantities from construction and demolition sites and recycled into new steel products.

## Energy Efficient

- Leading edge technology
- Studies by the Florida Solar Commission, metal roofs reflect as much as 70% of the sun
- Keeps attics cooler in the summer, translating into energy savings

## Fire Protection

- Metal is non-combustible, it will not burn or support the spread of fire.
- A wood roof generally accelerates the spread of fire, as the wood provides increased dry fuel for the fire.

## Lightning Susceptibility

- A metal roof is no more likely to attract lightning than any other type of roof.
- In the event lightning were to strike a metal roof, it will not combust like most other roofing systems.

## Lightweight

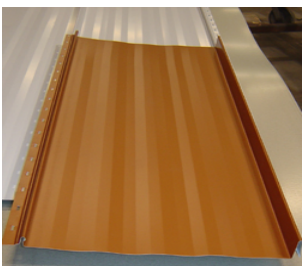
- Due to its light weight per unit area, structural savings can be realized in a building when compared to using heavier non-metal roofing alternatives.

" According to roofingandsiding.bobvila.com, there is no material more capable of protecting a structure from wind, rain, fire, or rot than a durable and energy-efficient metal roof."

## GoldinPanel

The GoldinPanel features a 5/8 inch high rib on nine inch centers with intermediate stiffening ribs. Used for both roofs and walls, the GoldinPanel is one of the most versatile and sturdy panels on the market due to its strength and design. The GoldinPanel is typically used for residential applications because of its cleaner, sleeker look and low profile. However, it is used in Commercial, Agricultural, and Industrial applications.

The Goldin Panel can also have a Wind rating of 140 MPH based on the Florida Building Code approval installation guidelines. The GoldinPanel also requires no caulking tape if installed properly due to its drain feature. This drain feature is a proprietary feature that allows water to drain down the panel and not collect. The GoldinPanel is available in a number of different gauges, lengths, and colors.



## Goldin Choice Standing Seam

A standing-seam metal roof consists of metal panels running vertically on the roof deck. Each panel has two seams that stand up vertically and are fastened together to seal the joint and keep the elements from penetrating. This design prevents screws from being exposed to the elements which is beneficial for a lower pitched roof, if installed properly.

Goldin Metals, Inc produces Standing Seam panels in 22, 24 and 26 gauge in widths from 12 to 26 inches. Goldin Metals, Inc have panels available in nail strip, snap seam, and mechanical lock. Goldin Choice also features rib heights of 1", 1 1/2," and 1 3/4".

For more information about these products and much more, contact one of our sales representatives at:

[www.goldinmetals.com](http://www.goldinmetals.com)

Gulfport, MS 228-896-6216

Harvey, LA 504-361-3622

Mobile, AL 251-452-6384

Lafayette, LA 337-314-0069

## R-Panel

The R-Panel features a 1 ¼ inch high rib on twelve inch centers with intermediate stiffening ribs. Used for both roofs and walls, the R-Panel is one of the most versatile panels on the market due to its strength and design. The R-panel is typically used in Commercial, Agricultural, and Industrial applications. However, it is also commonly used for residential applications.

The R-Panel with a purlin bearing leg is a structural panel (which means it does not require plywood). This panel can span purlins up to 5' and maintain 140 MPH wind rating on most designs based on the Florida Building Code approval installation guidelines. The R-Panel is available in a number of different gauges, lengths, and colors.



## 5V Crimp

The 5V Crimp offers a similar low profile as a standing seam roof at a more economical price. However, unlike the standing seam, screws will be exposed. Its low profile allows it to be used in Commercial, Agricultural, Industrial and Residential applications. This makes the 5V Crimp a very versatile panel.

The 5V Crimp can also have a Wind rating of 140 MPH based on the Florida Building Code approval installation guidelines. The 5V Crimp is available in a number of different gauges, lengths, and colors.

## Stone Coated Steel Roofing Systems

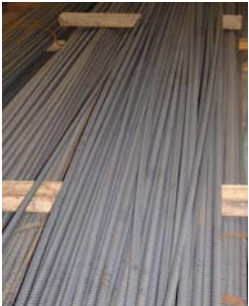
Stone Coated Steel Roofing Systems are available in Tile, Villa Tile, Shake, Shingle, and Shingle Plus (Architectural Shingle). Stone Coated Steel Roofing Systems can offer a classic look that features a traditional distinctive style, reinforced with the strength and longevity of steel. Available in a variety of colors, these colors incorporate a subtle natural shadow, which enhances the richness and detail of the roof.

Stone Coated Steel Roofing Systems is pressure formed aluminum-zinc alloy coated steel with an acrylic bonded stone chip finish. The stone coating resists fading and UV penetration. For more information, contact one of our Goldin Metals locations.



## Rebar and Foundational Steel

Goldin Metals, Inc has a large selection of foundational steel in stock including rebar in #3, #4, #5, #6, #7, #8, and wire mesh at **very low prices**.



For more information about these products and much more, contact one of our sales representatives at:

[www.goldinmetals.com](http://www.goldinmetals.com)

Gulfport, MS 228-896-6216

Harvey, LA 504-361-3622

Mobile, AL 251-452-6384

Lafayette, LA 337-314-0069

